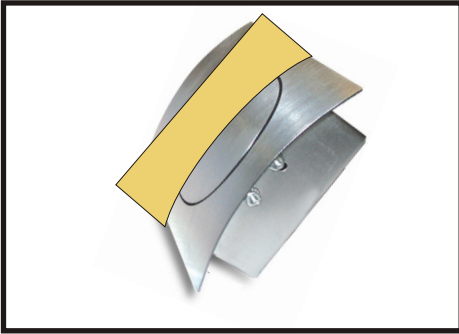
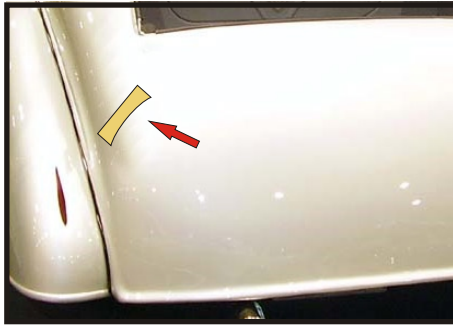


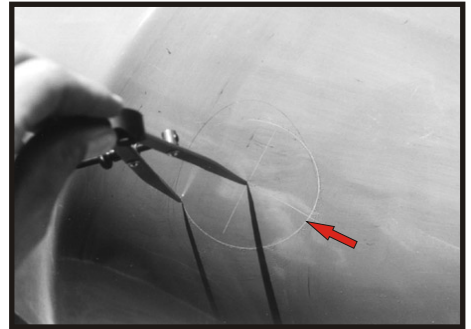
INSTALLING IN A FIBERGLASS PANEL



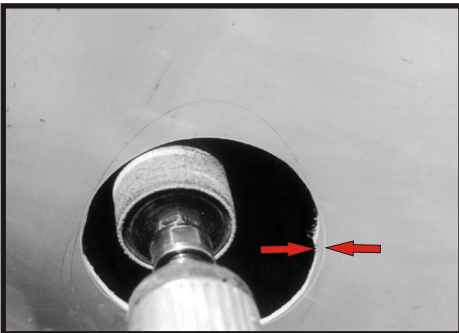
1. Make a template.



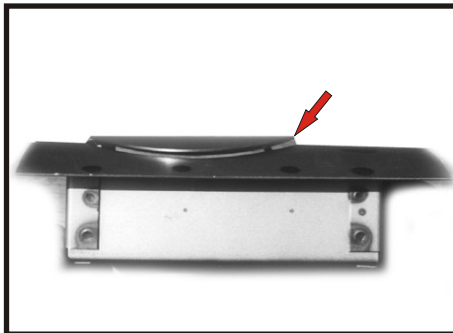
2. Use the template to find the best position for the fuel door.



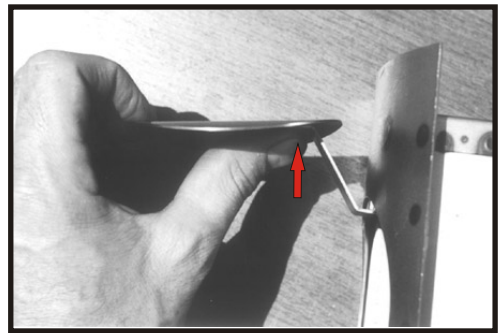
3. Scribe the opening of the door.



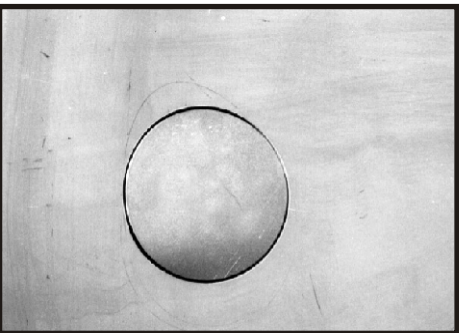
4. Make the initial cut 1/8" inside your scribe line then fine tune it with a drum sander.



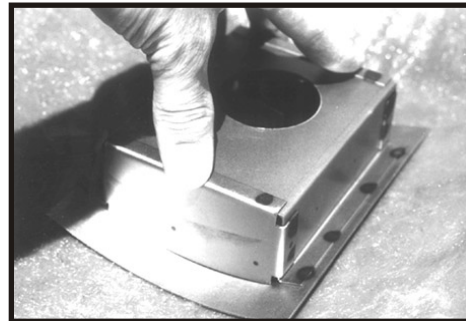
5. If you ordered your door for a fiberglass install it will come with the door raised about 3/16".



6. To adjust the door up, press firmly up on the underside to tweak the hinge arm. To lower the door press firmly with the door closed. To re-align the door push firmly on the edge of the door until you have it centered.



7. Continue tweaking the hinge arm and door until it fits the opening.



8. Now you are ready to bond the housing to the glass. You can use standard body filler to bond it in place. Make sure that the surfaces are clean and rough them with 36 grit. Once it is bonded you may want to add some fiberglass resin and mat to conceal the fuel door flange.

Hagan Street Rods
721 W. Monroe St.
New Bremen, Ohio 45869
(419) 629-1969
haganauto.com