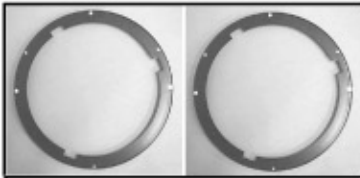




775C & 775BS Instructions

Form: 775.05.06

2- LAMP BASES



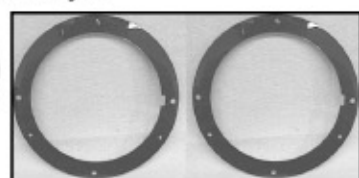
6- #6 x 1" SM SCREWS
6- #8 X 1.5" SM SCREWS
6-COMPRESSION SPRINGS



2- RETAINER RINGS



OPTIONAL ACCESSORIES Blue Dot Snake Eye

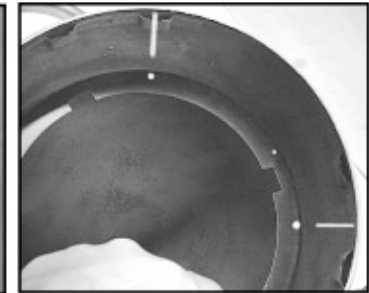
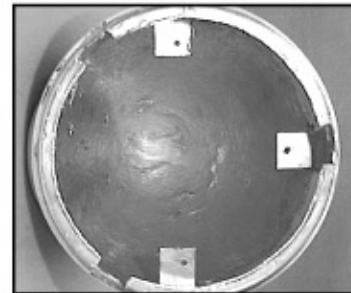
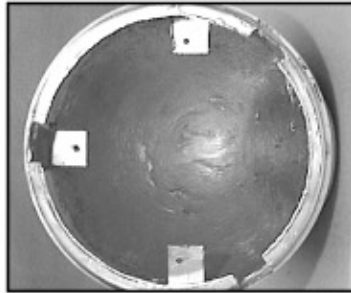
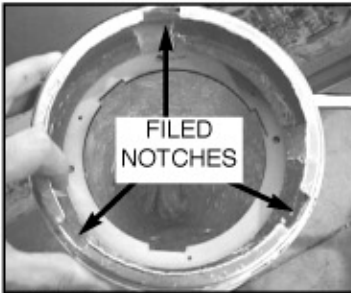


BLUE DOT & SNAKE EYE REQUIRE SPECIAL LAMP BASES. THEY ARE FREE WHEN YOU PURCHASE THE LAMPS.

2- TRIM RINGS

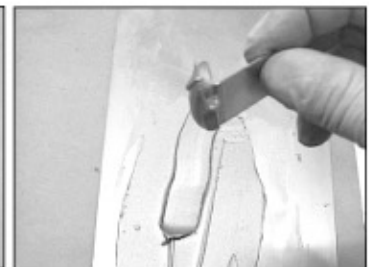
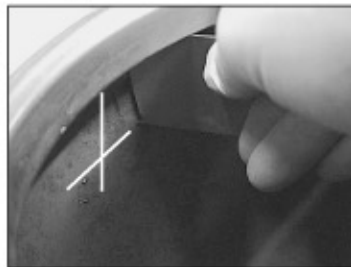
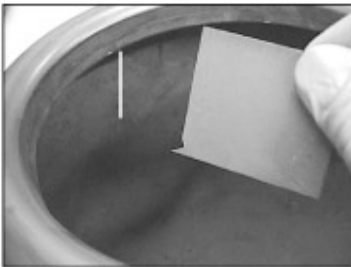


SEALED BEAMS NOT INCLUDED. USE WAGENER ONLY PART NO. H5006 . THESE ARE A HIGH AND LOW BEAM LAMP. YOU MAY ALSO USE HAGAN PART NO. LBDT575 (BLUE DOT) OR LSE575 (SNAKE EYE) 5 3/4" HALOGEN LAMPS.



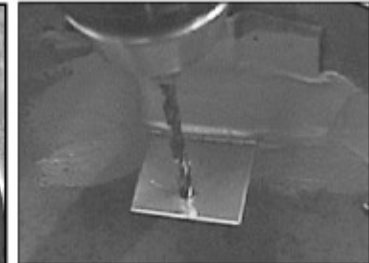
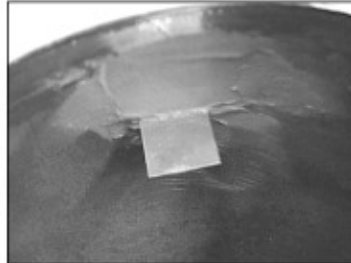
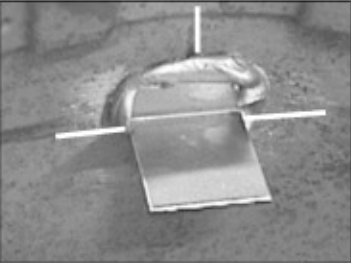
STEP ONE:
DO NOT ATTEMPT TO INSTALL TRIM RINGS UNTIL YOU HAVE COMPLETED THIS STEP!!
Remove original lamps and hardware from buckets. Hold trim ring up to bucket and mark the position of the retainer clips. Now file three openings in the lip to provide clearance for the clips. Clips are designed to hold onto the back of the rolled bead. If you have fiberglass buckets this area will be filled in. You will need to grind three indentions into the glass.

STEP TWO:
Shown above is the position of the mount tabs. To determine the proper position hold the lamp base inside the bucket. Line up the top of the ring with the top of the bucket and center the ring in the bucket. Now mark the position of the mount holes. They should be at 12 & 6 o'clock and 3 or 9 o'clock as shown.



STEP THREE:
To mark the depth of the mount tabs you must install the trim rings. Take the scribe tool included in you kit and hold it square against the inside lip of the trim ring. Scribe a line at the three positions.

STEP FOUR: WELD OR BOND MOUNT TABS
To bond the tabs scuff the area of the bucket and the tabs with 40 grit. We recommend Metal 2 Metal body filler. Mix it with extra catalyst so it will set quickly

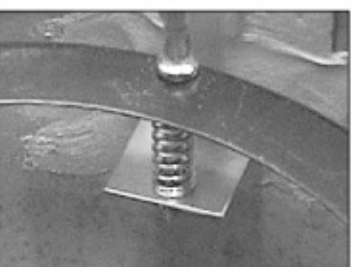


Stick the tabs in place with flange pointing out of the bucket. Use more filler and spread over flange. The idea is to encase the tab in the filler. Work quickly. The extra hardener will make it set in about 60 seconds. Smooth the filler behind the tabs with your finger.

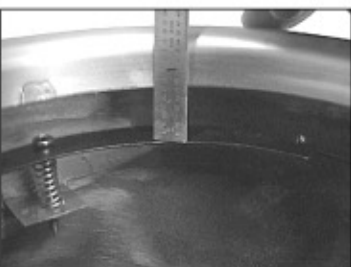
STEP FIVE:
Once the filler has cured hold the lamp base against the tabs, center it and mark the position of the mount holes.

Drill 1/8" pilot holes

1



Install the lamp base with three springs and the 1-1/2" screws.



If you are using sealed beams adjust the lamp base to 1" from the trim ring I.D. If you are installing Hagan Blue Dot or Snake Eye lamps adjust base to 3/4".



When installing or removing the trim it is best to put a few layers of masking tape on the painted surface so you do not scratch the paint.

Route the wiring and you are ready to install the lamps and trim.

Hagan Street Rod Necessities
721 W. Monroe St.
New Bremen, OH 45869
Phone: 419-629-1969
Fax: 419-629-1912
email: haganstreetrods@yahoo.com

2